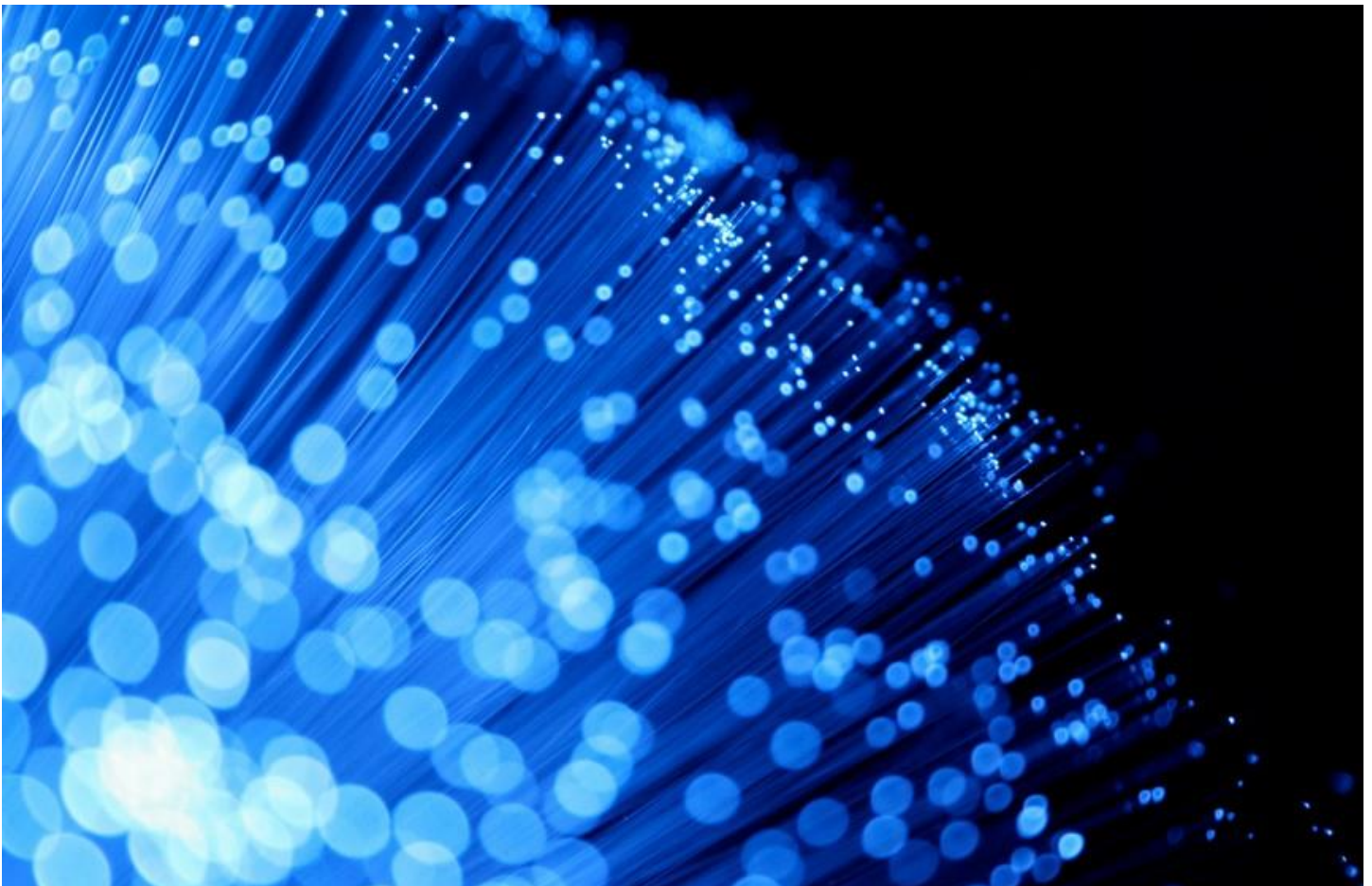


[Home](#) > [Communications](#) > [Wireless pits](#)

Wireless pits

GLOBAL real-time management solutions provider Modular Mining Systems has released the MasterLink Enterprise wireless network solution for bandwidth intensive open-pit mining environments.

[Marion Lopez](#) | 30 Apr 2015 | 1:29 | [News](#) |



The MasterLink Enterprise wireless network solution is designed for bandwidth intensive open-pit mining environments.

MasterLink Enterprise is scalable and sends real-time alerts between a central office and wireless devices onsite using a high network capacity, coverage and performance.

The system relies on Cisco wireless infrastructure and uses a 5.8 gigahertz radio frequency that provides point-to-mesh access point connectivity, enabling high-speed mesh communications such as multi-application data, voice and streaming video transmissions between the central office and mesh access points distributed throughout a mine.

“As mining applications, equipment and processes become increasingly complex, organisations are demanding more from their wireless networks,” Modular Mining Systems vice president, product innovation Michael Lewis said.

“In response, we designed the MasterLink Enterprise solution to meet the needs of current applications, as well as provide scalability for future growth in the years to come.”

The mesh network is said to be self-configuring and self-healing, automatically reconfiguring itself to prevent interruptions when changes such as opening new pits and faces occur.

Other core features include a rugged, purpose-built, cold-weather operational hardware design and low-maintenance, centrally-managed infrastructure.

MasterLink Enterprise is available on solar-powered trailers or as fixed solutions.

RELATED CONTENT

- [Having an impact](#)
- [A 3D vision](#)
- [BIMmed up](#)
- [Communicate this](#)
- [With all due dispatch](#)

TAGS

Modular Mining Systems



Related articles

